

You may have noticed that TES has been quiet for a while on the "Bulletin front".

Why is that?

Announcing Our Strategic Investment Plan

Whilst we have been busy expanding our mCERTs coverage, in the background, we have undertaken a strategic review of our laboratory facilities to identify and solve many of the key production bottleneck areas which have hindered service delivery in the past.

The upshot of the review is that **over £1m** has just been invested in our Environmental Chemistry laboratory to increase capacity and deliver high quality, accredited, analytical data at much improved timeframes and in customer tailored formats.

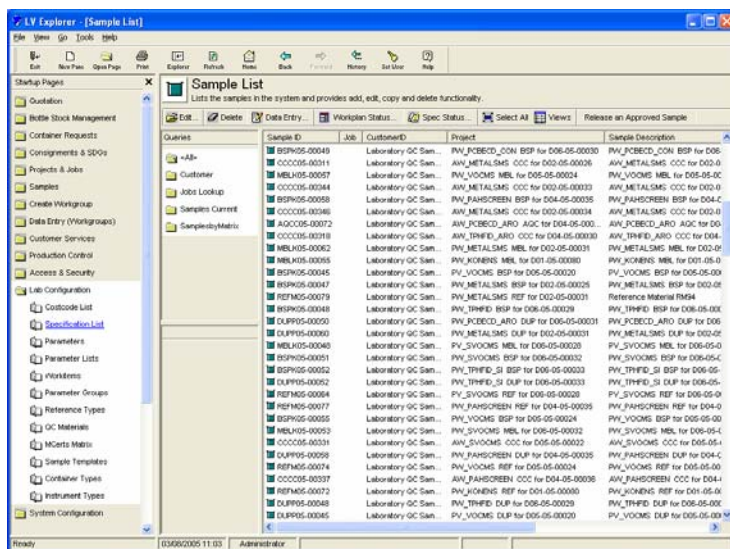
Here's some of the detail and over the next few weeks, we'll be trying to see you to discuss how the changes at Bretby will revolutionise the "quality first" service everyone acknowledges is TES' forte.

- LVS SAPPHIRE™ LIMS SYSTEM:** Quality control and warrantable results have always been a routinely delivered product at TES, but now compliance of our results is further assured by our in-house designed, high specification Laboratory Information Management System. We are confident that we will redefine the standard of data reporting in the UK.



Agilent 5975 GCMS system

- NEW METHODS AND LOWER MDLs :** Faster scanning electronics means that the new 5975 can scan the mass range at much quicker rates. In essence, **Fast Analysis** has truly arrived. We will be able to offer many more methods using GCMS due to the enhanced sensitivity. Whilst other have purported to offer low detection limits, **TES' equipment can actually deliver** under a fully QA/QC'd regime.
- THREE ICPMS SYSTEMS:** We are increasing our metals handling capability by 50% **through the installation of a third ICPMS system.** The vulnerability posed by downtime will be eliminated.
- ACCOUNT MANAGEMENT:** We have reshaped our Customer Services team to provide you with a **reliable single point of contact account management throughout the duration of your projects.** TES will remain the laboratory where **you** still count.
- NO HIDDEN CHARGES:** With TES "there are no hidden charges" – why not take a look at our new formatted, easy to use, price schedule? As usual, our rates include for courier costs (delivery and collection), sample containers, preservatives and sample disposal.



Need the price list or more information?

Please e-mail tes.sales@mesg.co.uk or call

- STANDARDISED ANALYTICAL PLATFORM:** We have standardised our analytical platforms to maximise cross utilisation of equipment which will help us handle the ever changing daily demands.
- NEW GCMS SYSTEMS:** TES is the first UK environmental laboratory using the new Agilent Technologies 5975 Mass Spectrometer. We have doubled our capability and are using **sixteen 5975 GCMS instruments.** The new instruments not only have improved sensitivity but can also operate in SIM and scan modes simultaneously.

Dulcie Thornewill
 TES Bretby
 P O Box 100
 Bretby Business Park
 Burton upon Trent
 Staffordshire
 DE15 0XD.

Tel 01283 554416 or Fax 01283 554549